

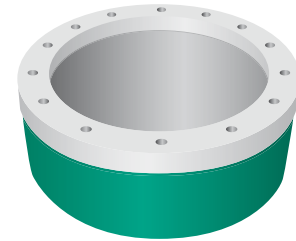
ProFlange[®]v3

Flange
Measurement
for
Professionals!



Flange Measurement at its best with

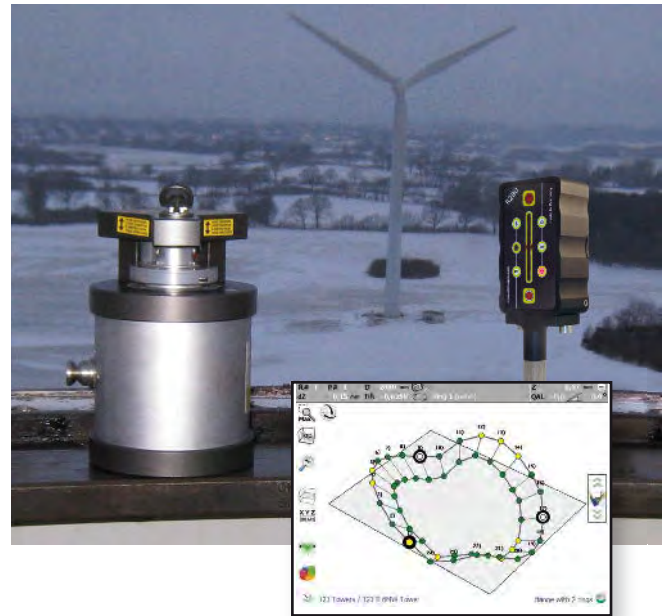
ProFlange[®] v3



ProFlange offers you the the best in flange measurement software, allowing in-depth analysis as well as full documenting capability.

Features of the system:

- Wireless environment
- Automised laser plane adjustment
- Two user interfaces:
 - On-site measurement mode or full analysis mode
- Immediate measurement and results
- 2D and 3D result graphics
- Short waviness
- Taper and tilt
 - This feature allows instant recognition of taper and tilt, showing the direction (outer or inner) and showing the severity
- Project Management
- Extensive reporting capability
 - Generate a report as .pdf and .csv, with all graphics and charts
- Complete analysis feature
 - Best fit views as well as a three-point modus for evenness, allow quick and easy assessment as well as supplying data for use when setting up for corrective measures
- Database Management
 - There is also a feature enabling direct upload into the Internet allowing potential assessment worldwide
- Safety
 - Data security is maximised using digital signatures and proof of originality



Required hardware

The equipment package **SP ProFlange 10** contains e.g.:



T330
Sweep Laser
Part No. BG 830203



R280
Laser Receiver
Part No. BG 831500



T330 Quick Fit
Adapter for flanges
Part No. BG 830580



DU320
optional UMPC
Part No. IT 200410



Magnet with spring
probe-tip for R310
Part No. BG 830195

FL 1070E 01/13 · Design /DTP: Seichter & Steffens Grafikdesign, D-44229 Dortmund, Germany · Copyright 2013 Status Pro Maschinenmesstechnik GmbH. This brochure or parts thereof may not be copied or reproduced in any other way without prior approval by Status Pro GmbH. Technical correctness and completeness remain reserved and may be subject to changes without prior information. Information about mistakes in this brochure may contain will be welcome at any time.